

**SSDlife**  
*User Manual*

**Aug. 5, 2009**



***Apacer Technology Inc.***

9/F, No. 100, Hsin Tai Wu Rd., Hsichih, Taipei Hsien 221, Taiwan

Tel: +886-2-2696-1666 Fax: +886-2-2696-1668

[www.apacer.com](http://www.apacer.com)

---

## Revision History

| Revision | Date       | Description      | Remark |
|----------|------------|------------------|--------|
| 0.1      | 01/09/2009 | Preliminary      |        |
| 1.0      | 08/05/2009 | Official release |        |

## **Table of Contents**

|                                       |          |
|---------------------------------------|----------|
| <b>1. INTRODUCTION.....</b>           | <b>4</b> |
| <b>2. PURPOSE.....</b>                | <b>4</b> |
| <b>3. APPLICATION FLOW CHART.....</b> | <b>4</b> |
| <b>4. SYSTEM REQUIREMENT .....</b>    | <b>5</b> |
| <b>5. INSTALLATION.....</b>           | <b>5</b> |
| <b>6. USER INTERFACE .....</b>        | <b>9</b> |

## 1. Introduction

S.M.A.R.T. is an acronym for Self-Monitoring, Analysis and Reporting Technology, a supervising system for computer storage devices such as hard drive or solid state drive (SSD) to detect and report on various indicators of reliability, in the hope of foreseeing failures.

Essentially, there are two types of failures that SSD may suffer: the predictables and the unpredictable one.

The predictable

- Generally, it refers to the wearing and aging of the SSD such as average/maximum erase count, bad block count and free list.

The unpredictable

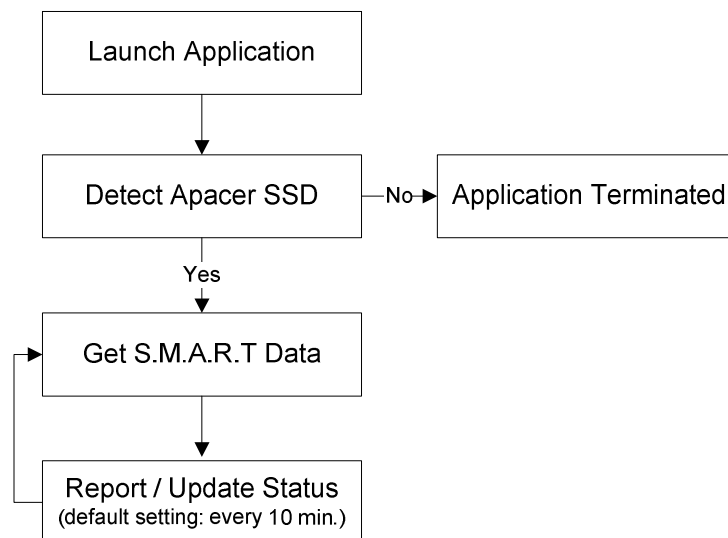
- Generally, it refers to the failures which occur suddenly and randomly such as an electronic component failing.

The objective of S.M.A.R.T is to provide warnings of impending failures while time remains to take preventative actions for users or system administrators to back up precious valuable data to a substitute device.

## 2. Purpose

In order to minimize unscheduled downtime and provide real-time interactions to enable the effective solid state drives management on the host system.

## 3. Application Flow Chart



## 4. System Requirement

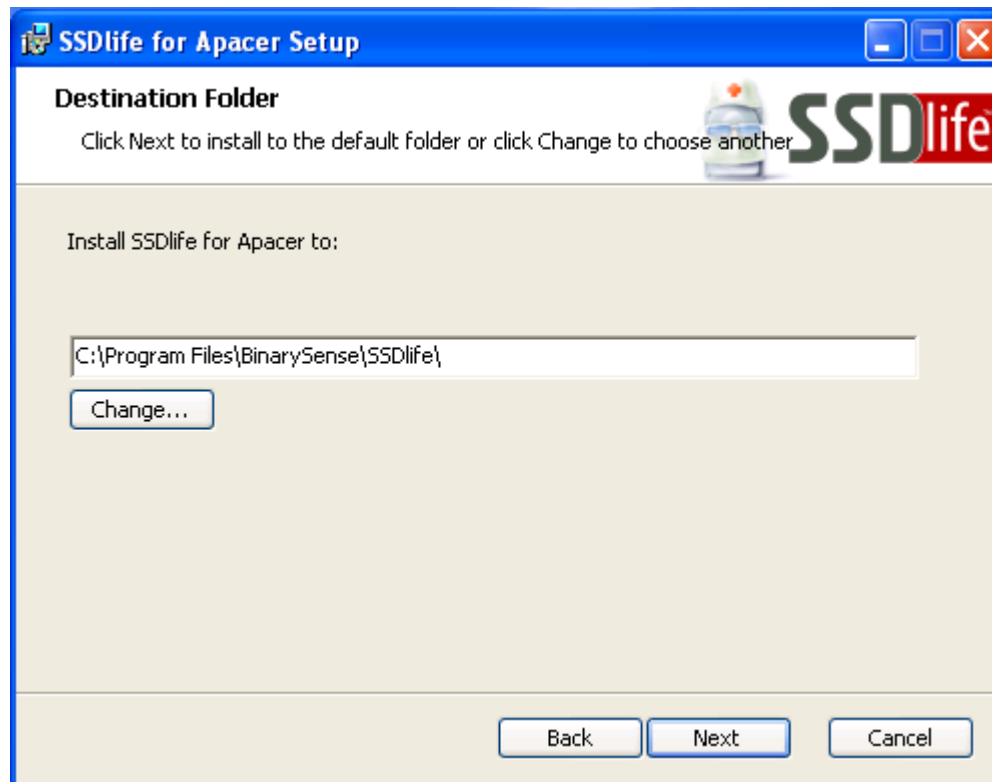
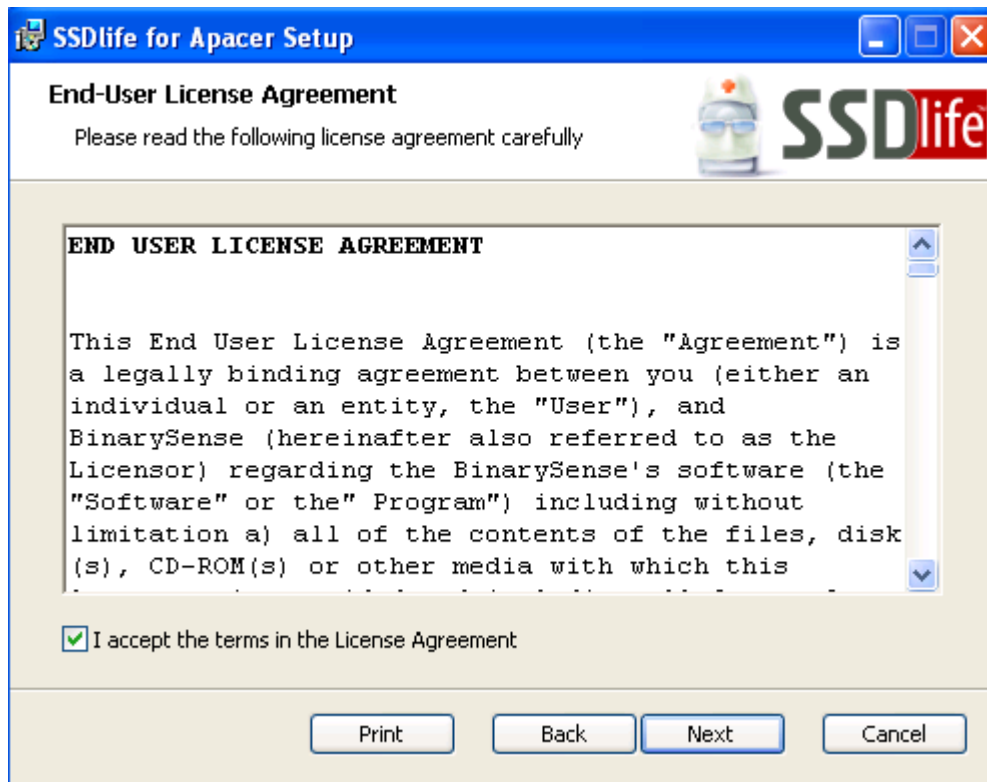
- OS support
  - Microsoft Windows 2000
  - Microsoft XP (All 32-bit versions)
  - Microsoft Vista (All 32-bit versions)
- Disk space
  - 1.64MB free space of disk

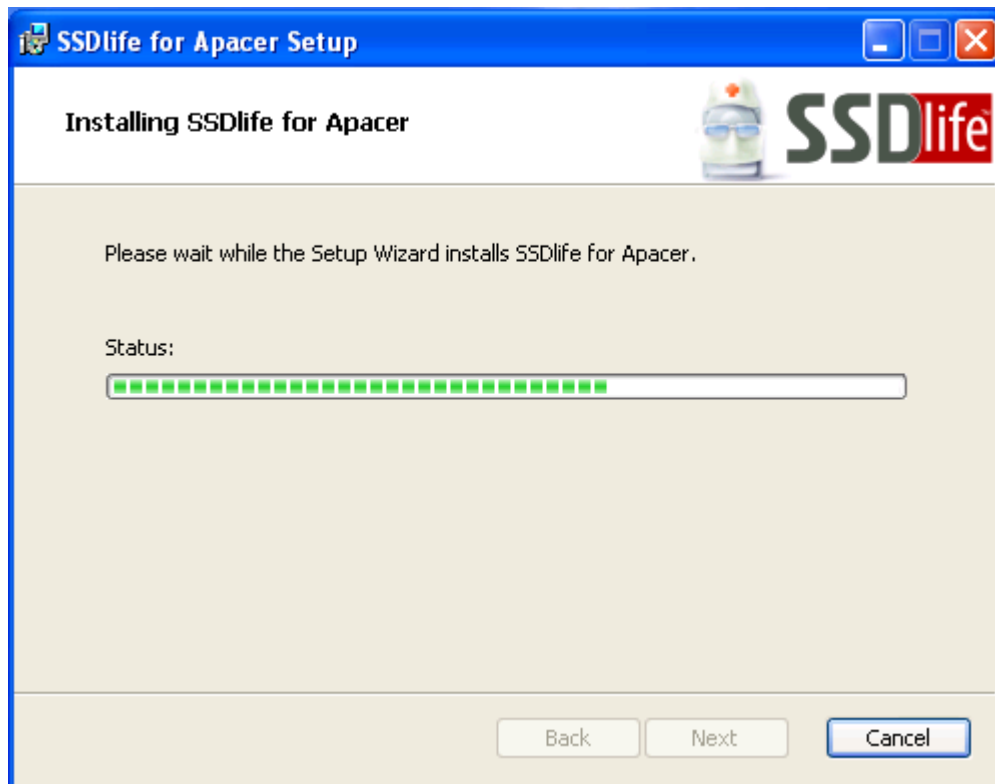
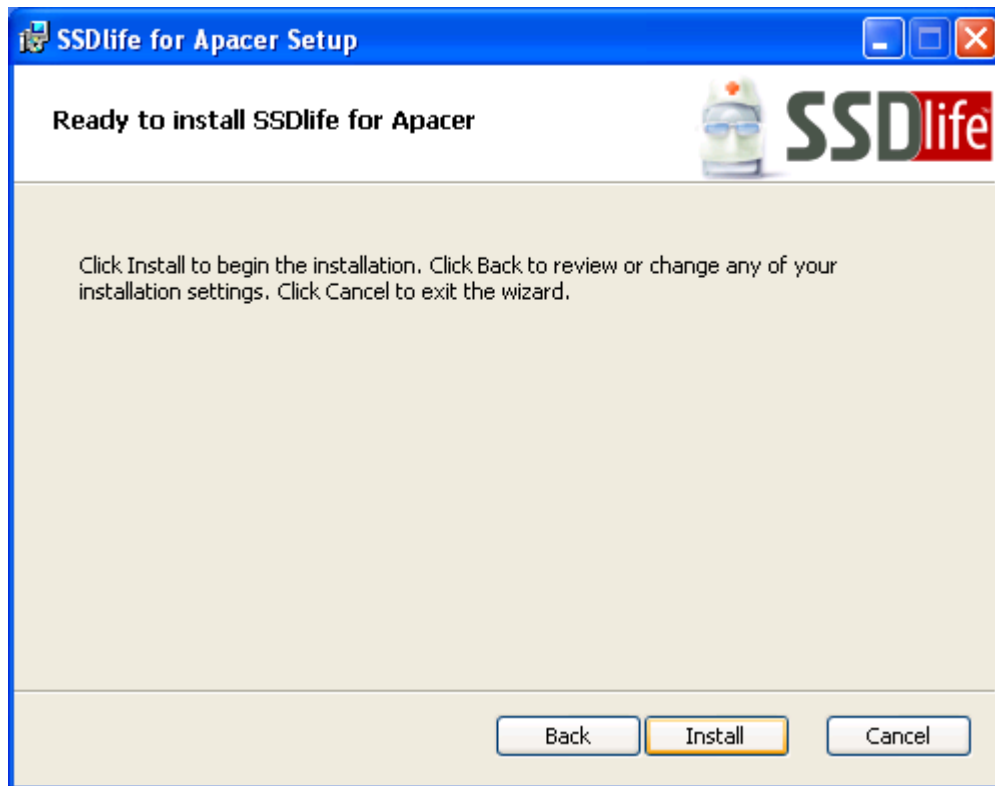
## 5. Installation

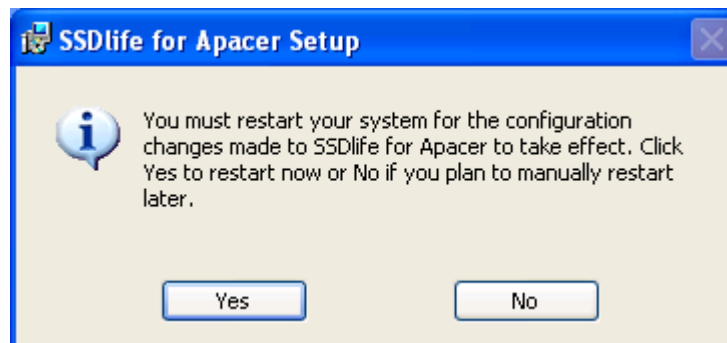
Simply double-click on the installer file, SSDlife\_for\_Apacer\_x.x.x.msi<sup>1</sup>, and follow the on-screen instructions (see the figures below) to complete the installation. System reboot is required for the installation to take effect.



<sup>1</sup> x.x.x: represents the version of the utility







## 6. User Interface



### 1. Minimize:

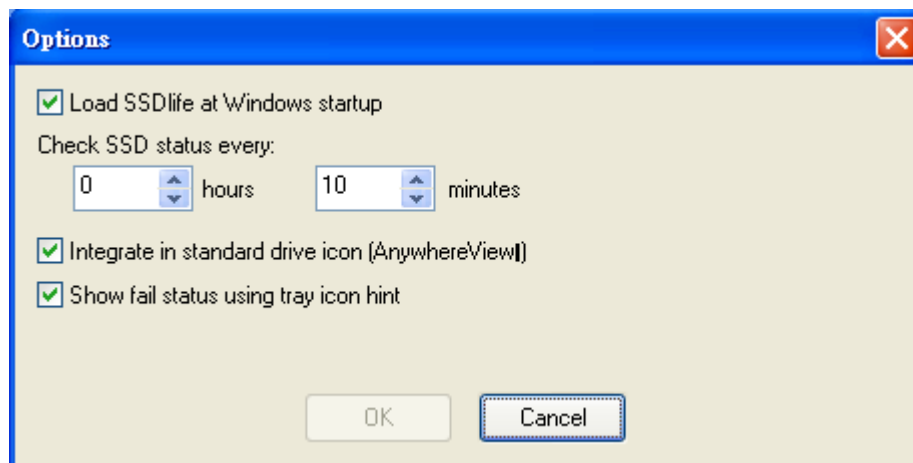
SSDlife keeps monitoring device's health status in the background while the utility is minimized.

## 2. Manual Bar:

- File



- Refresh  
Refresh SSD health status immediately
- Options  
It allows users to configure options for SSDlife. Remaining the default setting is recommended.



- Save Report  
A report of SSD SMART status will be generated.
- Exit  
End and exit the SSD monitoring

# SSDlife User Manual

- Languages

Current the SSDlife supports the following languages:

- English
- Chinese (Taiwan)
- Chinese (PRC)
- Japanese



- Help



- Visit Apacer website  
Visit Apacer official website containing latest information about SSD

- Visit SSDlife homepage  
Visit SSDlife official website containing latest information about the programs
- About  
General information about the program

### 3. Tabs

Each tab represents each Apacer SSD installed on your computer.



### 4. Summary

This section lists the general information of the SSD installed on your computer.

### 5. Overall health status



It indicates the warning status of the SSD and ideal timing to start backing up important data.



It indicates the healthy status of the SSD.

### 6. One-line health status

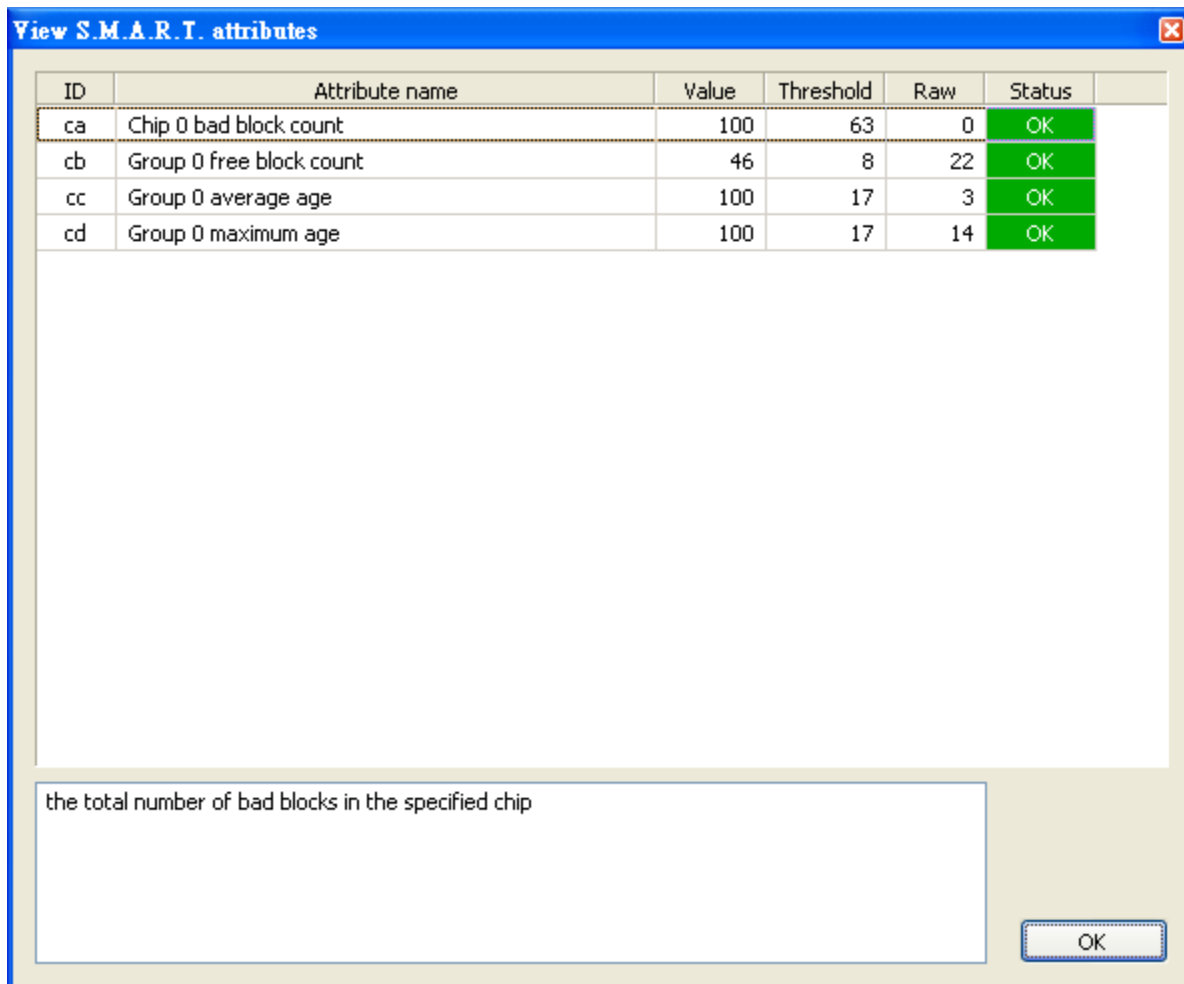
One-line health status reports the overall status according to the calculation of each attribute value. A “View S.M.A.R.T attributes” window pops up while the *one-line health status* is clicked.

- View S.M.A.R.T attributes window

The window contains the S.M.A.R.T attributes with the parameters such as value, threshold and raw data.

The name of the attributes varies depends on the models of Apacer SSD. For more details about the attributes please refer to the product S.M.A.R.T white paper.

- Parameter
  - Value: current value in percentage
  - Threshold: the value in percentage should never go below
  - Raw: the usable data count to the ID
  - Status: overall status of the SSD (OK or Fail)



The screenshot shows a window titled "View S.M.A.R.T. attributes" with a table of S.M.A.R.T attributes. The table has columns for ID, Attribute name, Value, Threshold, Raw, and Status. Below the table is a text box containing the description "the total number of bad blocks in the specified chip" and an "OK" button.

| ID | Attribute name           | Value | Threshold | Raw | Status |
|----|--------------------------|-------|-----------|-----|--------|
| ca | Chip 0 bad block count   | 100   | 63        | 0   | OK     |
| cb | Group 0 free block count | 46    | 8         | 22  | OK     |
| cc | Group 0 average age      | 100   | 17        | 3   | OK     |
| cd | Group 0 maximum age      | 100   | 17        | 14  | OK     |

the total number of bad blocks in the specified chip

OK

---

### 7. Health monitoring

When SSDlife is launched, it records the started and last checked time, and period of health monitoring.

### 8. Disk information

This table contains all logical Apacer SSDs on the computers with letters, volume labels, file systems and information about total sizes and free (available) space.