

Protection Zone

User Manual

Revision 1.0



Apacer Technology Inc.

4F, No.75, Sec.1, Xintai 5th Rd., Xiizhi City, Taipei County 221, Taiwan,
R.O.C.

Tel: +886-2-2698-2888

Fax: +886-2-2698-2886

Revision History

Revision	Date	Description	Remark
0.1	01/15/2009	Preliminary	
1.0	11/23/2009	Update document version to 1.0	

Table of Contents

1. General Description	4
2. Definition	4
3. System Requirement	4
4. Installation	5
5. Starting the Utility	9
5.1 FUNCTION FLOWS	9
5.2 PROCEDURES	10

1. General Description

Protection zone is a utility which allows users to enable the protection on the specific zone (partition) of Apacer solid state drive with the three options: un-protected, read-only, and restricted mode.

The purpose of this document is to help users up with the utility installation and configuration.

2. Definition

- **Zone**
The definition of a zone means a present partition of the Apacer solid state drive. A maximum of 4 zones (partitions) can be configured for each physical SSD.
- **Restricted Zone:**
A zone in restricted state will not be accessible by neither read nor write commands.
- **Read-only Zone:**
A zone in read-only state will be accessible by read command only.
- **Unprotected Zone:**
A zone in unprotected state will be fully accessible.

3. System Requirement

This section describes the system requirement for protection zone utility.

- **Apacer solid state drive**
A zone which is designate to any modes should be a primary partition.
- **Microsoft Windows XP series**
Currently, the utility supports Microsoft Windows XP series only.

4. Installation

This section demonstrates the installation of Protection Zone.

Launch the setup wizard

Simply double click the PTZoneXXX.exe (where XXX stands for utility version)

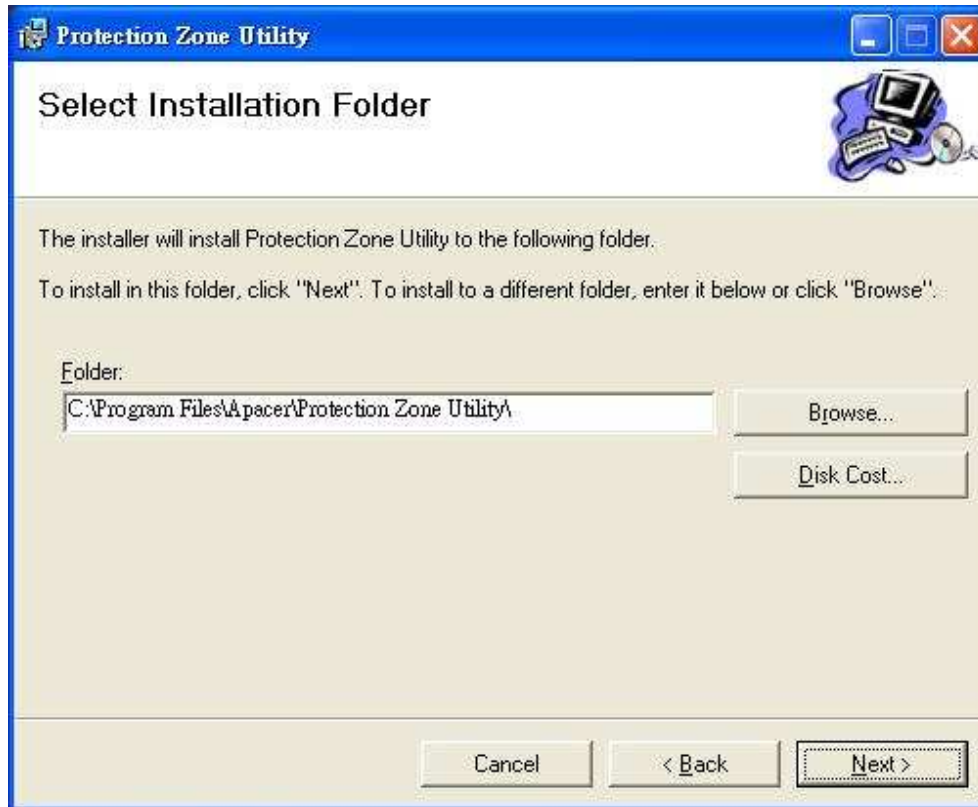


Protection Zone User Manual



Select an installation folder

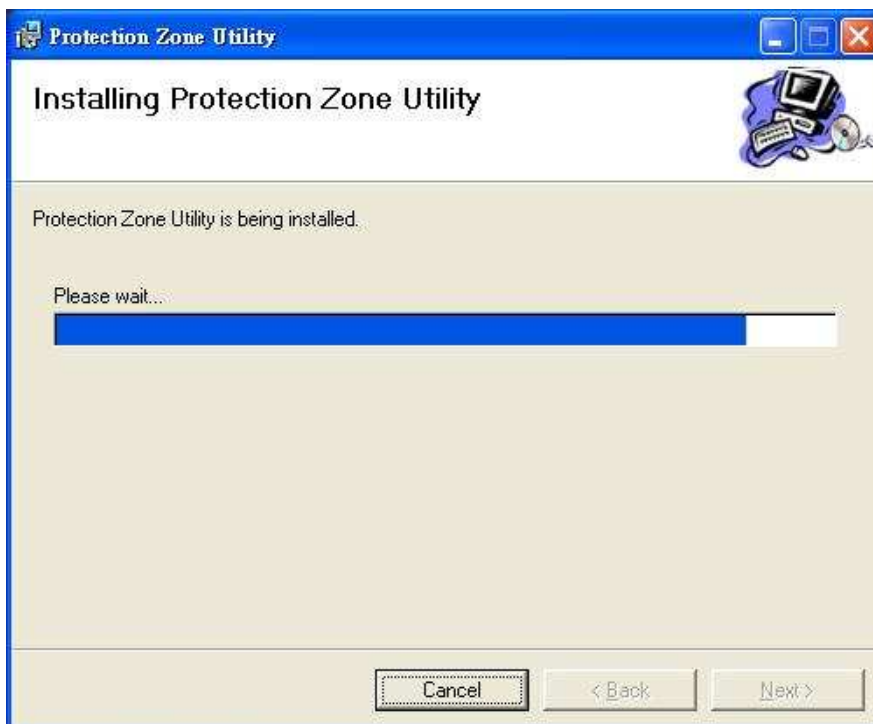
Click [Next] to install in default directory, or click [Browse] to select different directory



Protection Zone User Manual

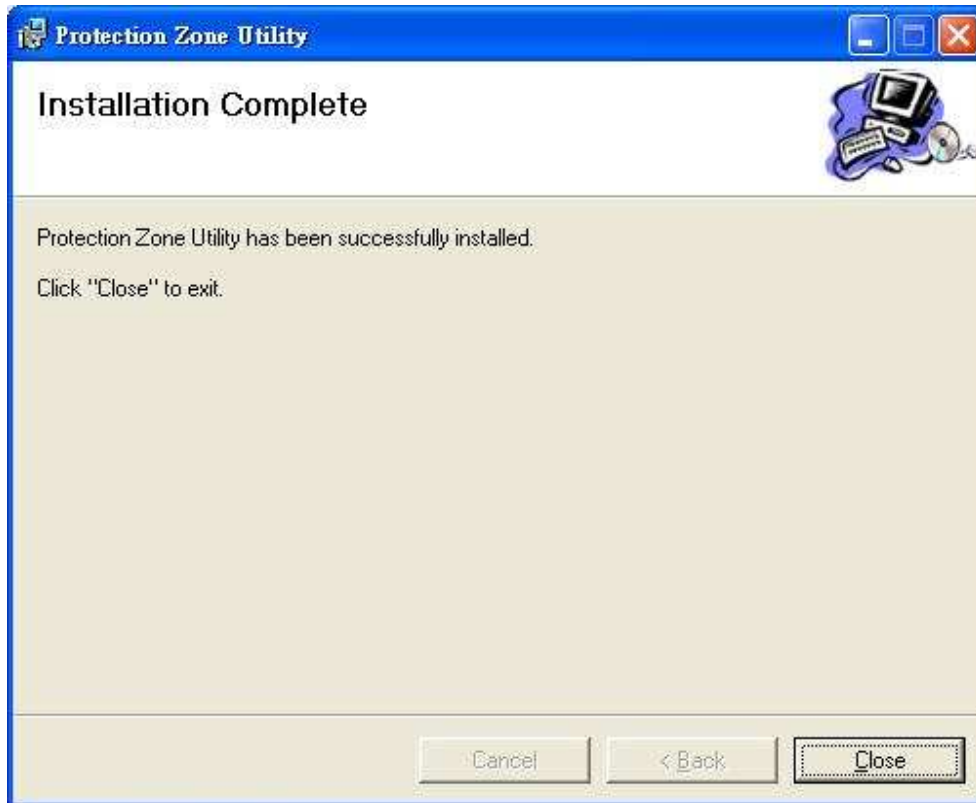
Confirm and begin the installation

Click [Next] to start the installation



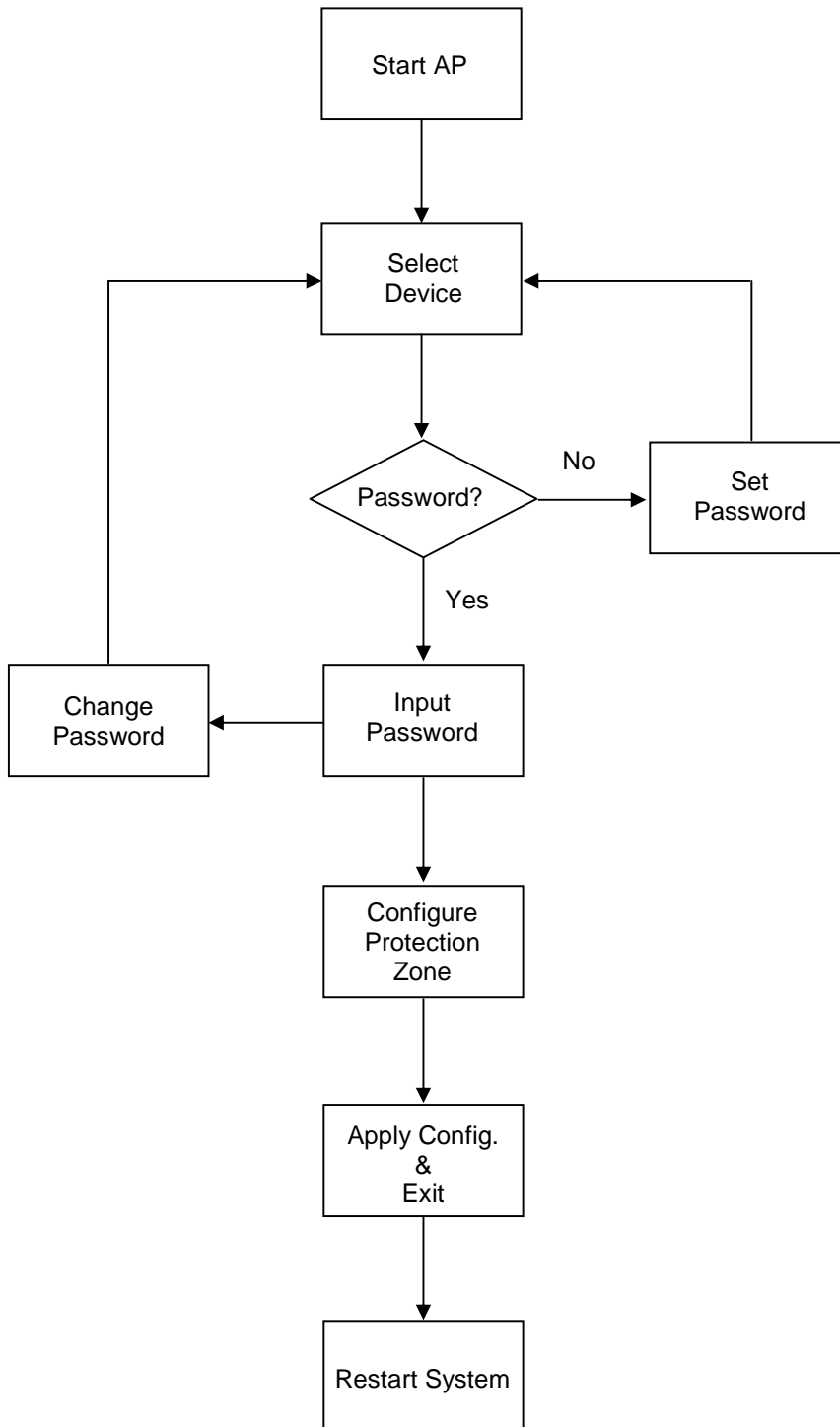
Installation Complete

Click [Close] to exit installation program



5. Starting the Utility

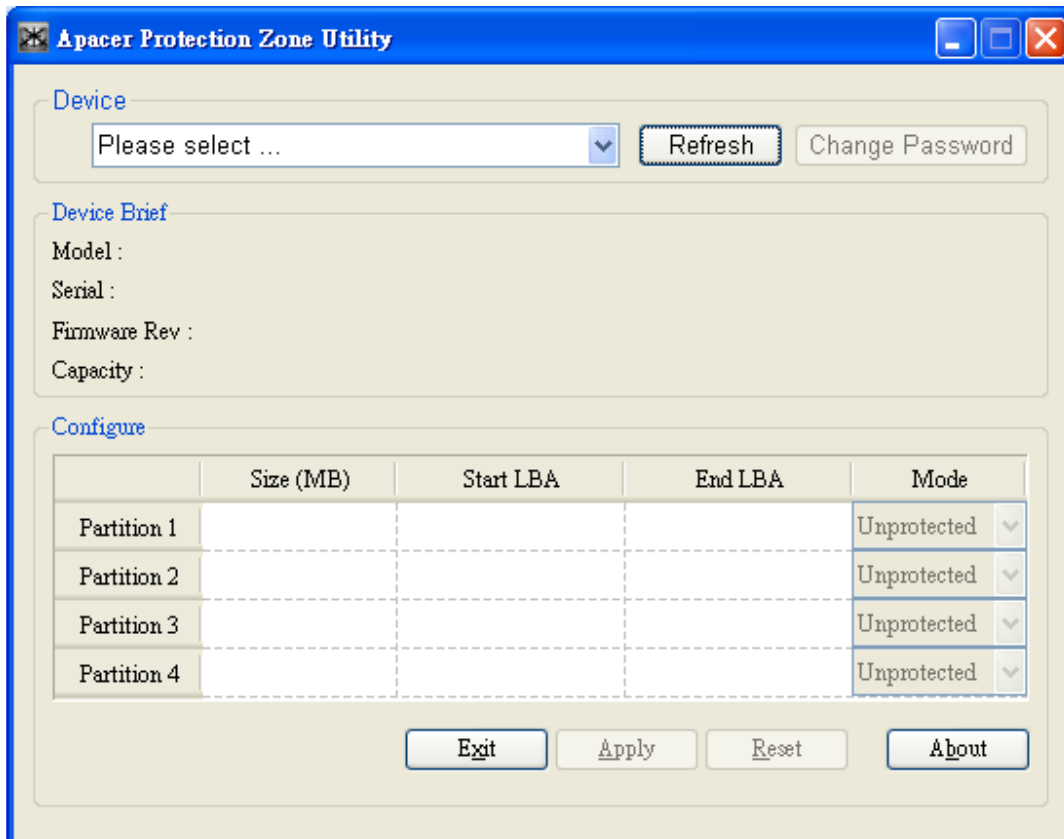
5.1 Function Flows



5.2 Procedures

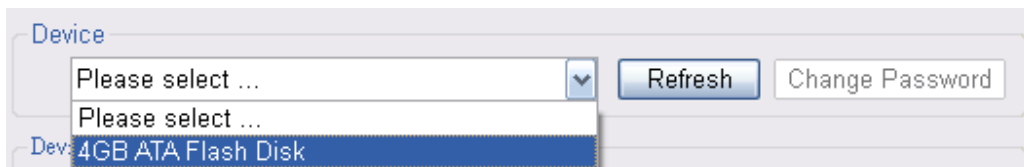
Start AP

To start the utility, simply double-click the icon  on the desktop to bring up the main screen.



Select Device

Use the drag-down window to select the device.



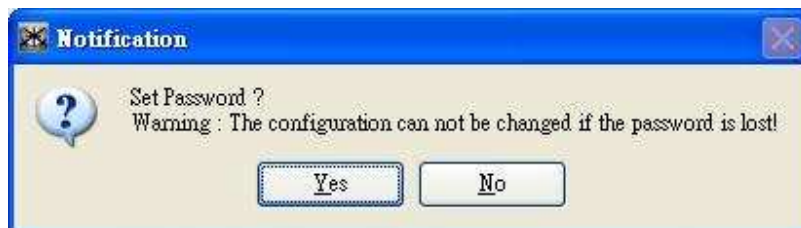
Password

The “Input Your Password” window pops up after the device has been selected.



- I. Enter your password on the blank field if it is available.
- II. For the first-time user, please click [**I have no password yet**] button to set a password.

Click “Yes” to continue setting a password on the popped-up notification window.



Enter your password by following rules.

- Valid characters: 0~9, a~f, and A~F
- A maximum of 10 characters
- A password can be formed by a combination of valid characters.



- III. Change Password
*To modify the current password, click the [**Change Password**] button after the current is input.*



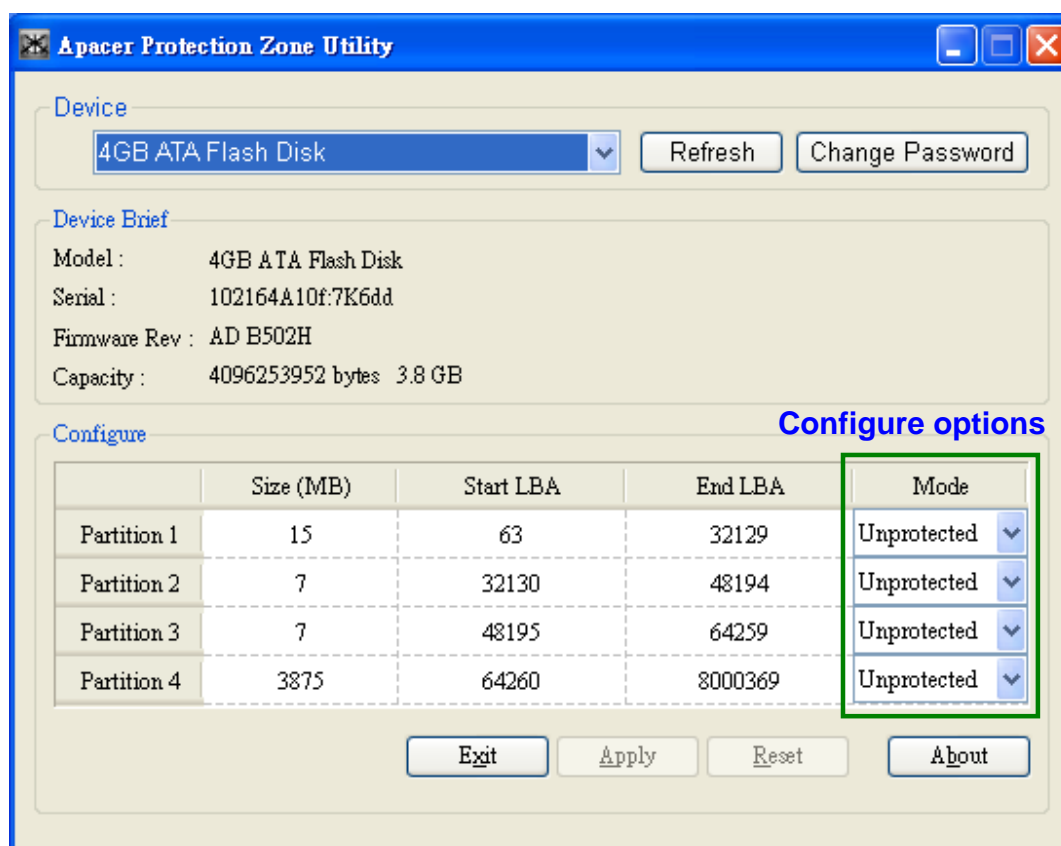
A notification window pops up after the password setting is complete.



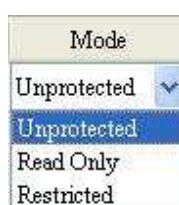
Configure Protection Zone

After the correct password is input successfully, the utility enters the configuration mode, displays the information of device, and enables the configure options.

The following illustration is an example of Apacer 4GB ADM (ATA-Disk Module) with 4 primary partitions presented.



To configure the protection modes, simply select it from the drag-down window.



Apply Configuration and Exit

After configuration is complete, click “Apply” and exit the utility.

Restart System

In order for the configuration to take effect, restarting the system is mandatory.

Protection Zone
User Manual



Apacer Technology Inc.

4F, No. 75, Xintai 5th Rd.,
Xizhi City, Taipei County 221, Taiwan
Tel: +886-2-2698-2888 Fax: +886-2-2698-2886
www.apacer.com

Copyright©2009 Apacer Technology Inc. All Rights Reserved.
Information in this document is subject to change without prior notice.
Apacer and the Apacer logo are trademarks or registered trademarks of Apacer Technology Inc.
Other brands, names, trademarks or registered trademarks may be claimed as the property of their
respective owners.